



Lockouts and last drinks:

The impact of the January 2014 liquor licence reforms on assaults in NSW, Australia

Patricia Menéndez*, Don Weatherburn*, Kypros Kypri[§] and Jacqueline Fitzgerald*

*NSW Bureau of Crime Statistics and Research, [§]School of Medicine & Public Health, University of Newcastle, Australia

FIGURES 1 - 12

Figure 1. The two target areas, Sydney CBD Entertainment including George Street South and Kings Cross Precincts, together with the proximal displacement area

Figure 2. Distal displacement areas in orange including Bondi Beach, Coogee, Double Bay and Newtown

Figure 3. Time series of the number of assaults for Kings Cross Precinct, Sydney CBD Entertainment Precinct, proximal and distal displacement areas together with the rest of NSW

Figure 4. Intervention variables representing pulse, step and smooth intervention effects

Figure 5. Estimated assault trend for the Kings Cross Precinct (KXP): Jan 2009-Sep 2014

Figure 6. Estimated assault trend for the Sydney CBD Entertainment Precinct (CBD): Jan 2009-Sep 2014

Figure 7. Estimated trend for the number of assaults for the George Street South (GSt): Jan 2009-Sep 2014

Figure 8. Estimated trend in assaults for the Proximal Displacement Area (PDA): Jan 2009-Sep 2014

Figure 9. Estimated trend for the number of assaults for the Distal Displacement Area (DDA)

Figure 10. Estimated trend for the number of assaults in the rest of NSW which excludes the targeted areas and displacement areas

Figure 11. Zoomed view of The Star Casino and surrounding streets

Figure 12. Estimated trend for the number of assaults in The Star Casino between Jan 2009 - Sep 2014

Figure 1. The two target areas, Sydney CBD Entertainment Precinct and Kings Cross Precincts, together with the proximal displacement area

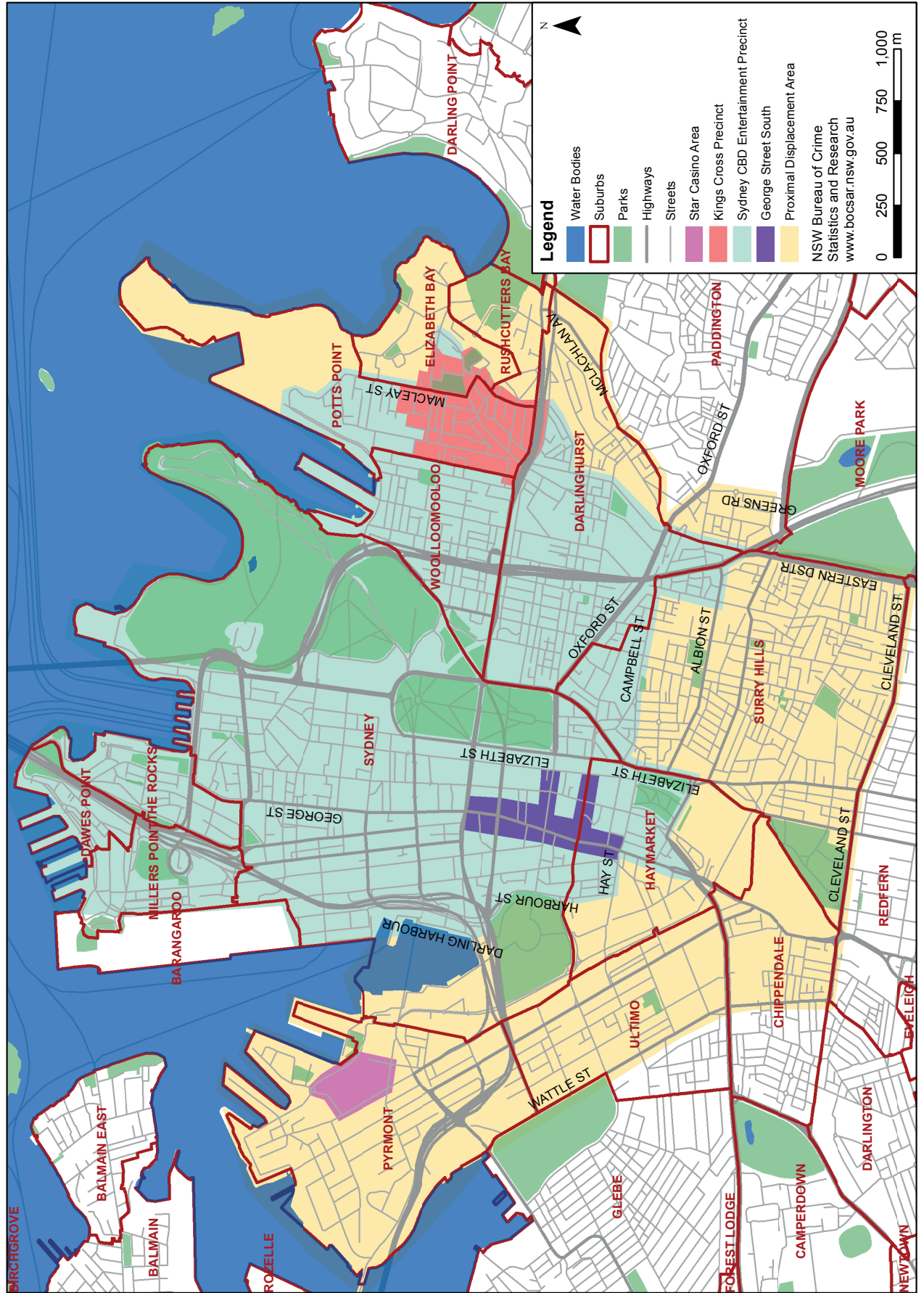


Figure 3. Time series of the number of assaults for Kings Cross Precinct, Sydney CBD Entertainment Precinct, proximal and distal displacement areas together with the rest of NSW

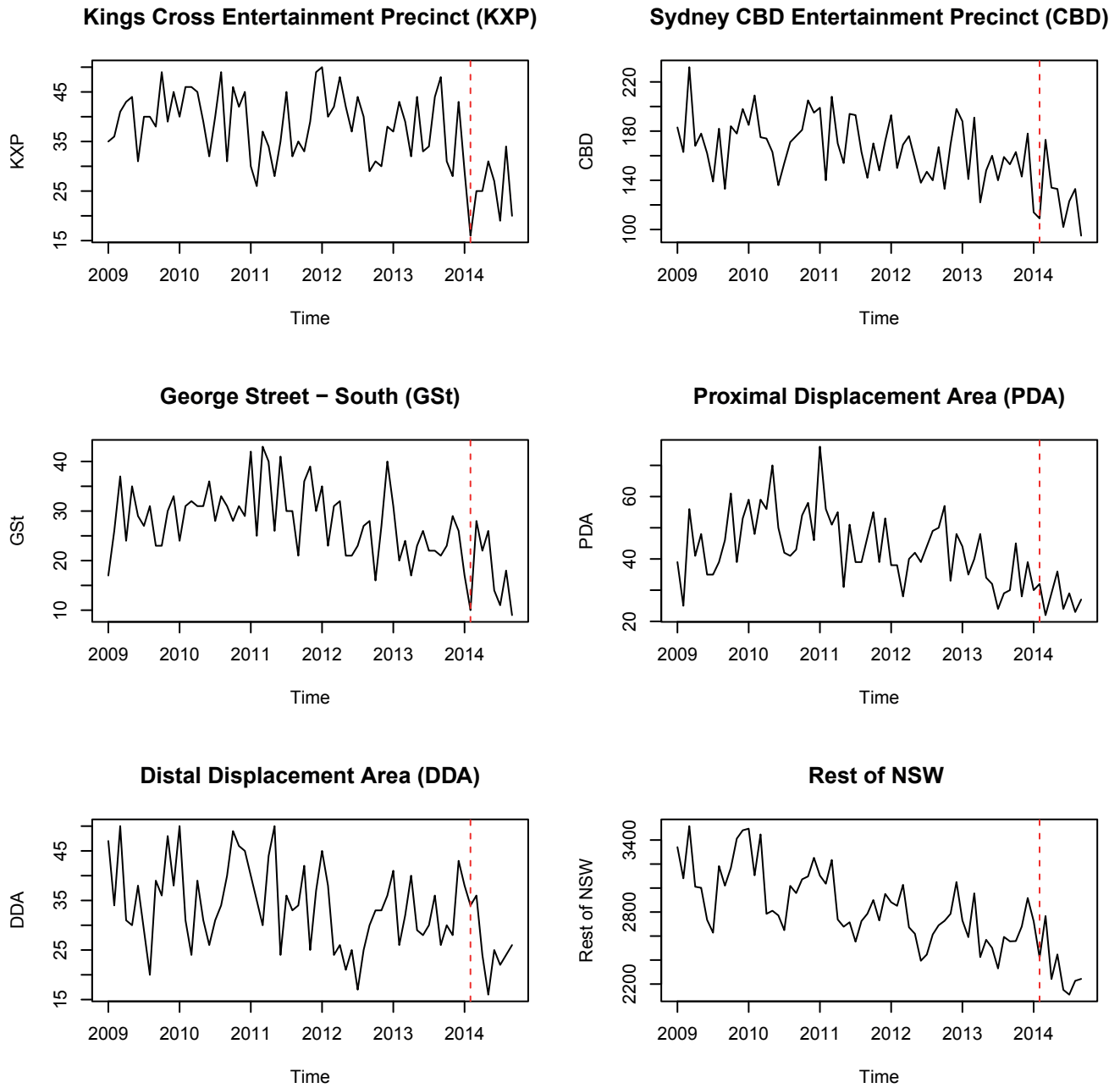


Figure 4. Intervention variables representing pulse, step and smooth intervention effects

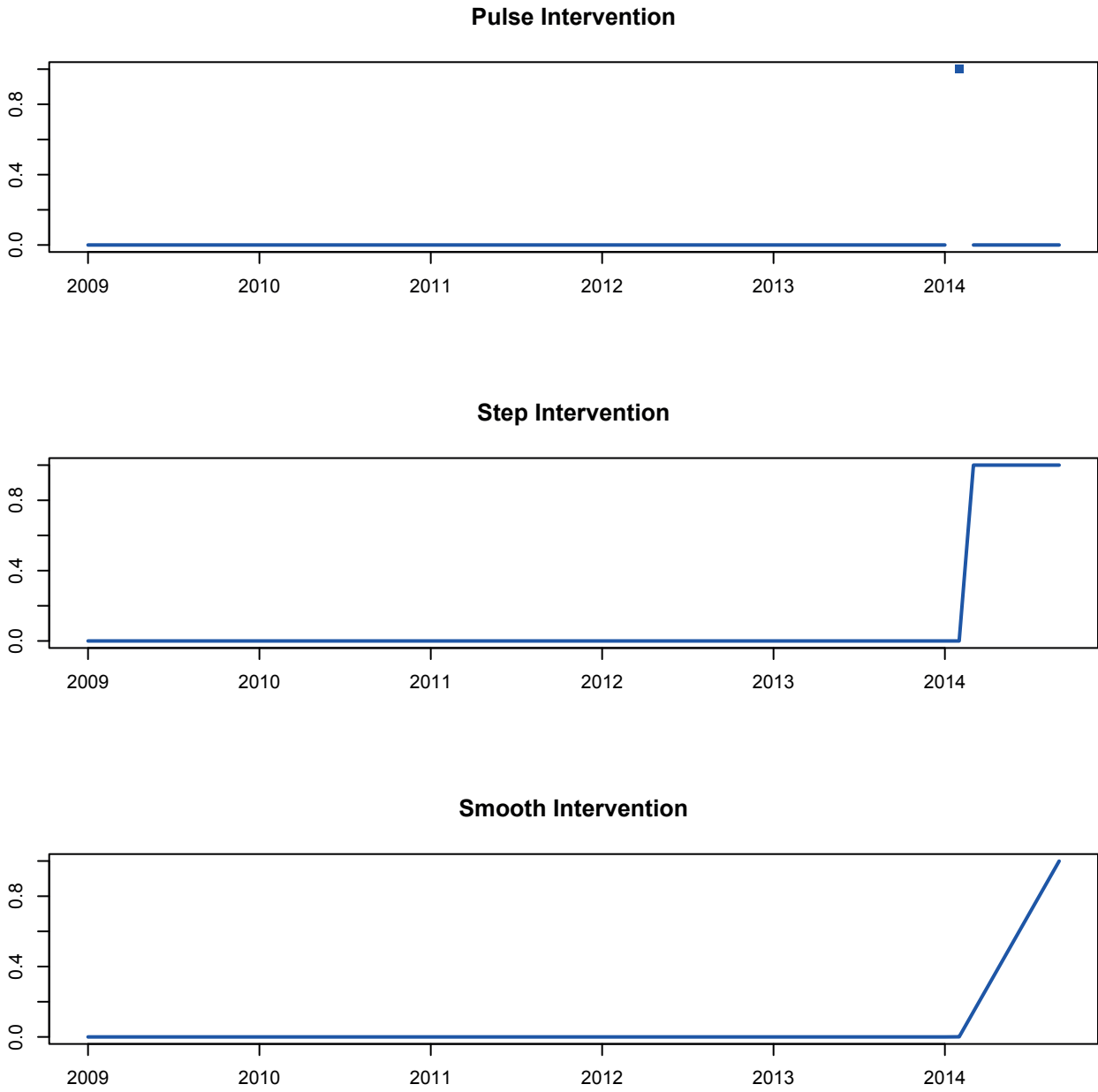


Figure 5. Estimated assault trend for the Kings Cross Precinct (KXP): Jan 2009-Sep 2014

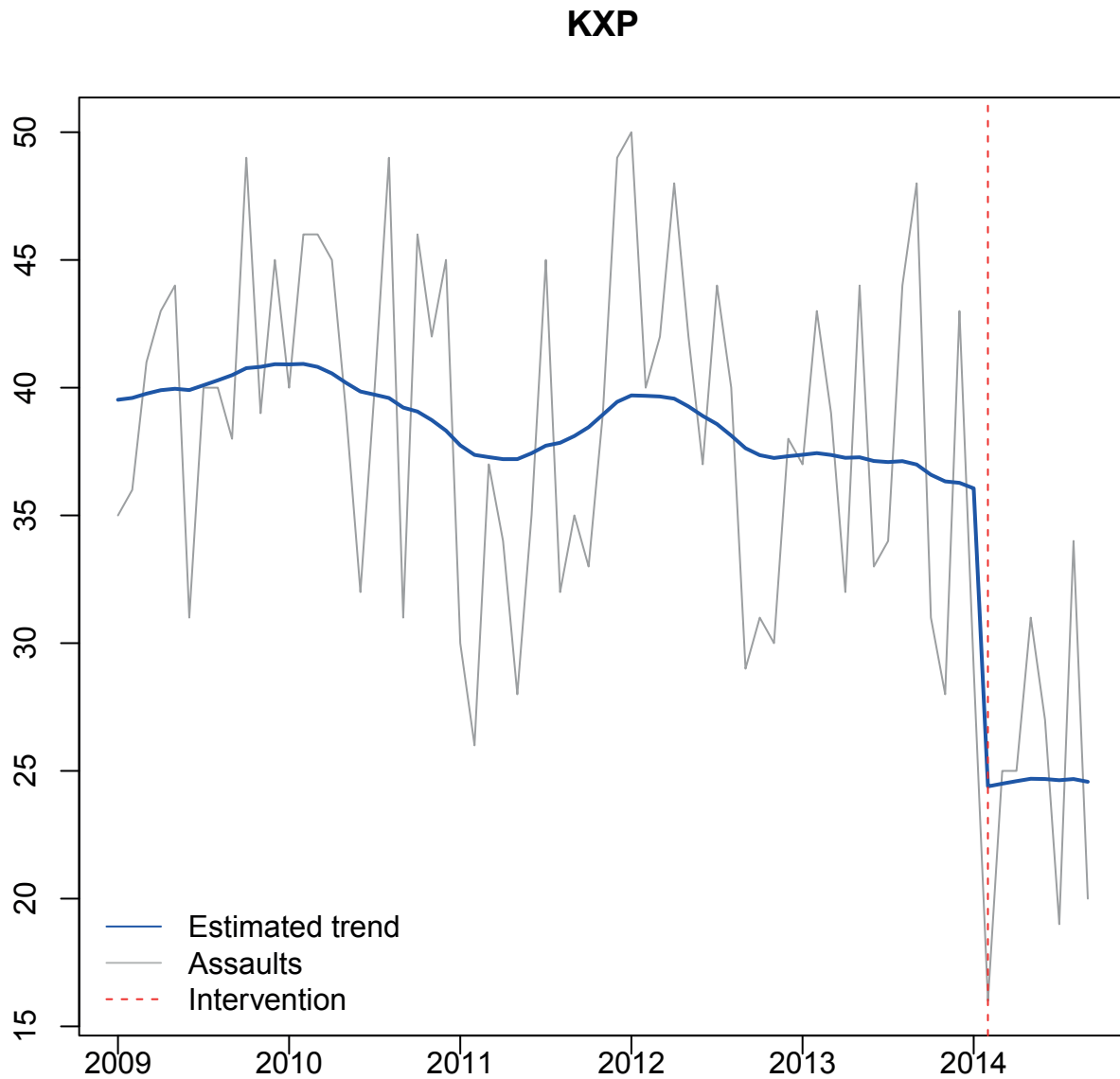


Figure 6. Estimated assault trend for the Sydney CBD Entertainment Precinct (CBD): Jan 2009-Sep 2014

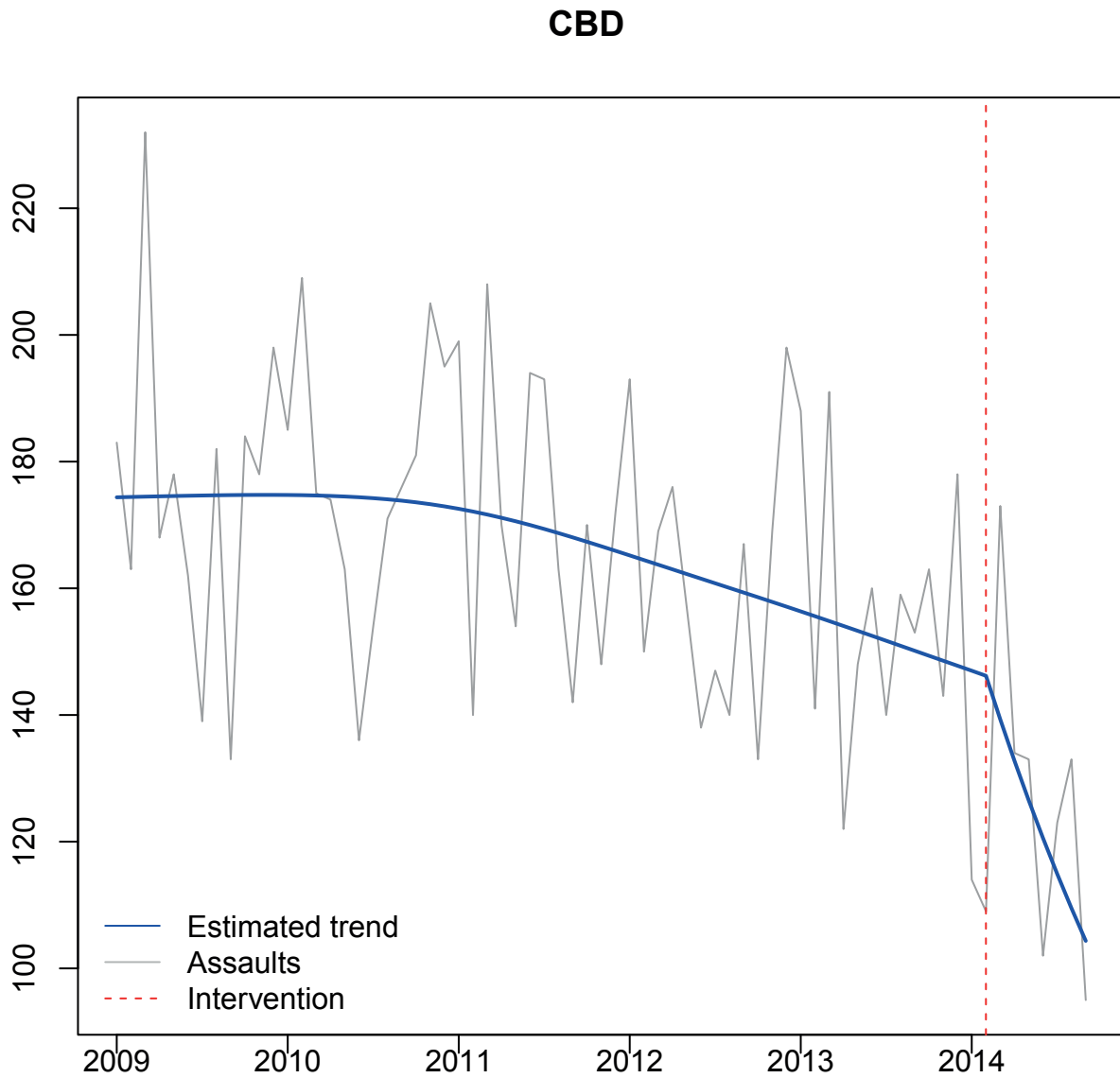


Figure 7. Estimated trend for the number of assault for the George Street South (GSt): Jan 2009-Sep 2014

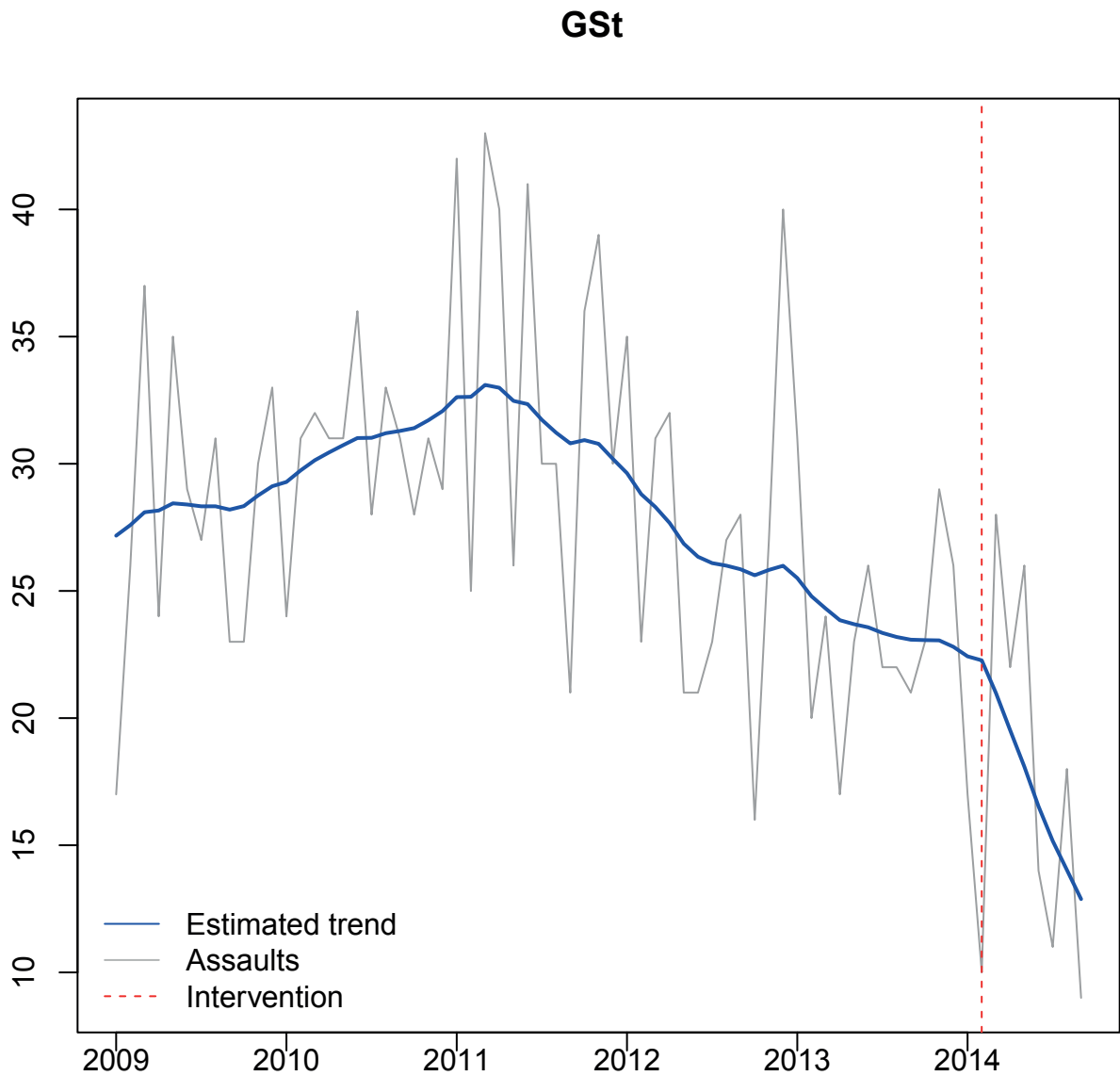


Figure 8. Estimated trend in assaults for the Proximal Displacement Area (PDA): Jan 2009-Sep 2014

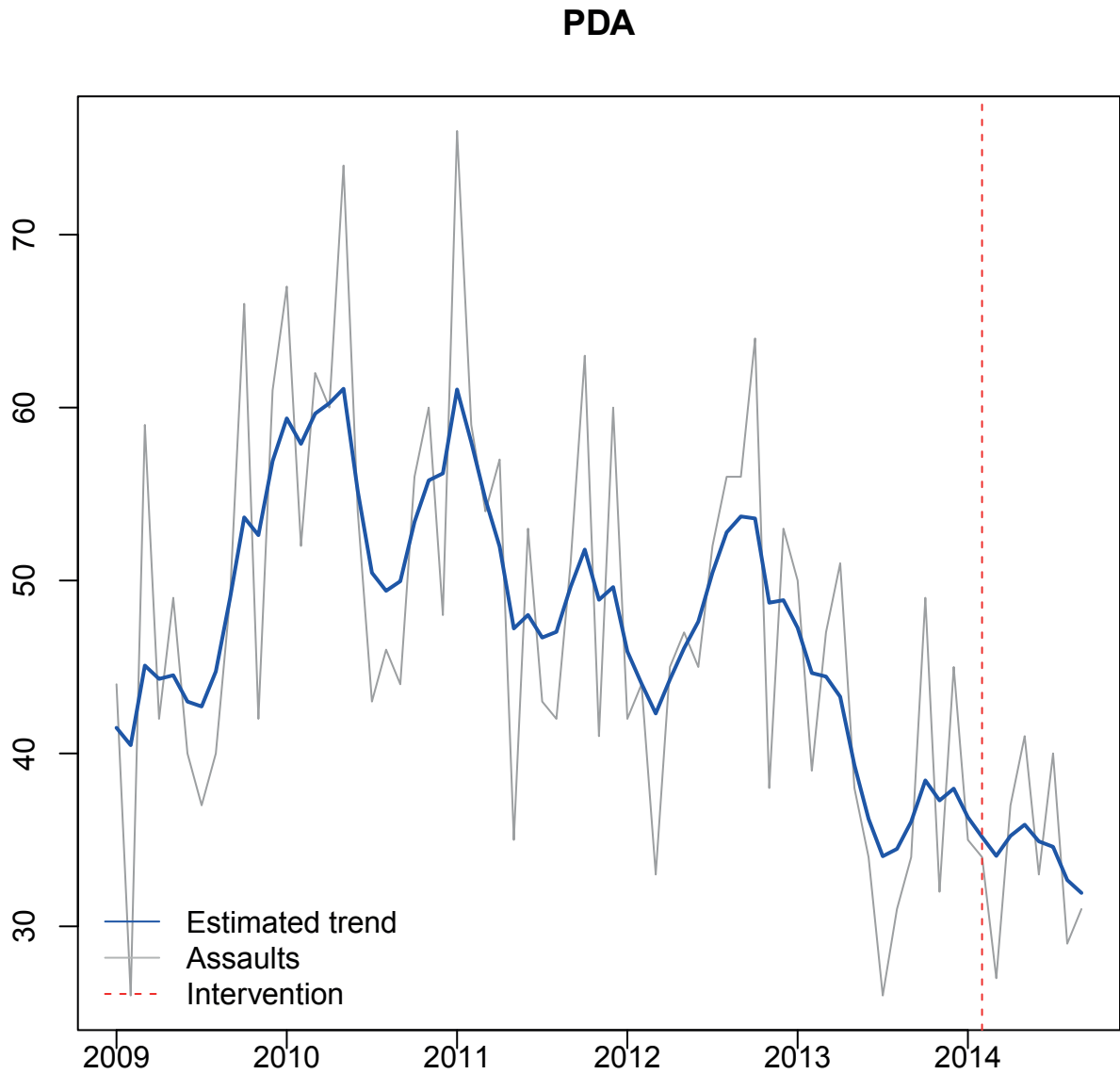


Figure 9. Estimated trend for the number of assaults for the Distal Displacement Area (DDA)

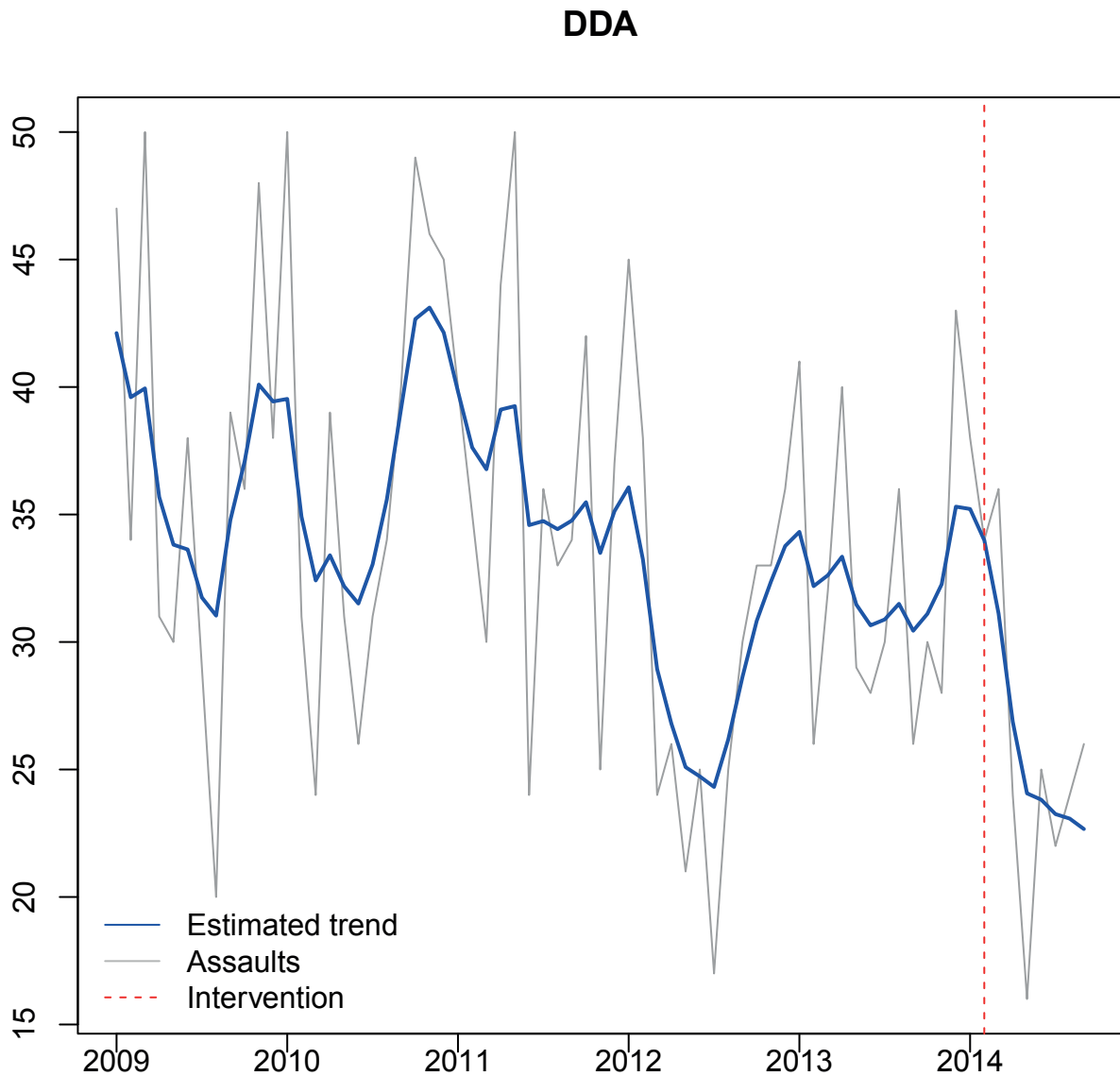


Figure 10. Estimated trend for the number of assaults in the rest of NSW which excludes the targeted areas and displacement areas

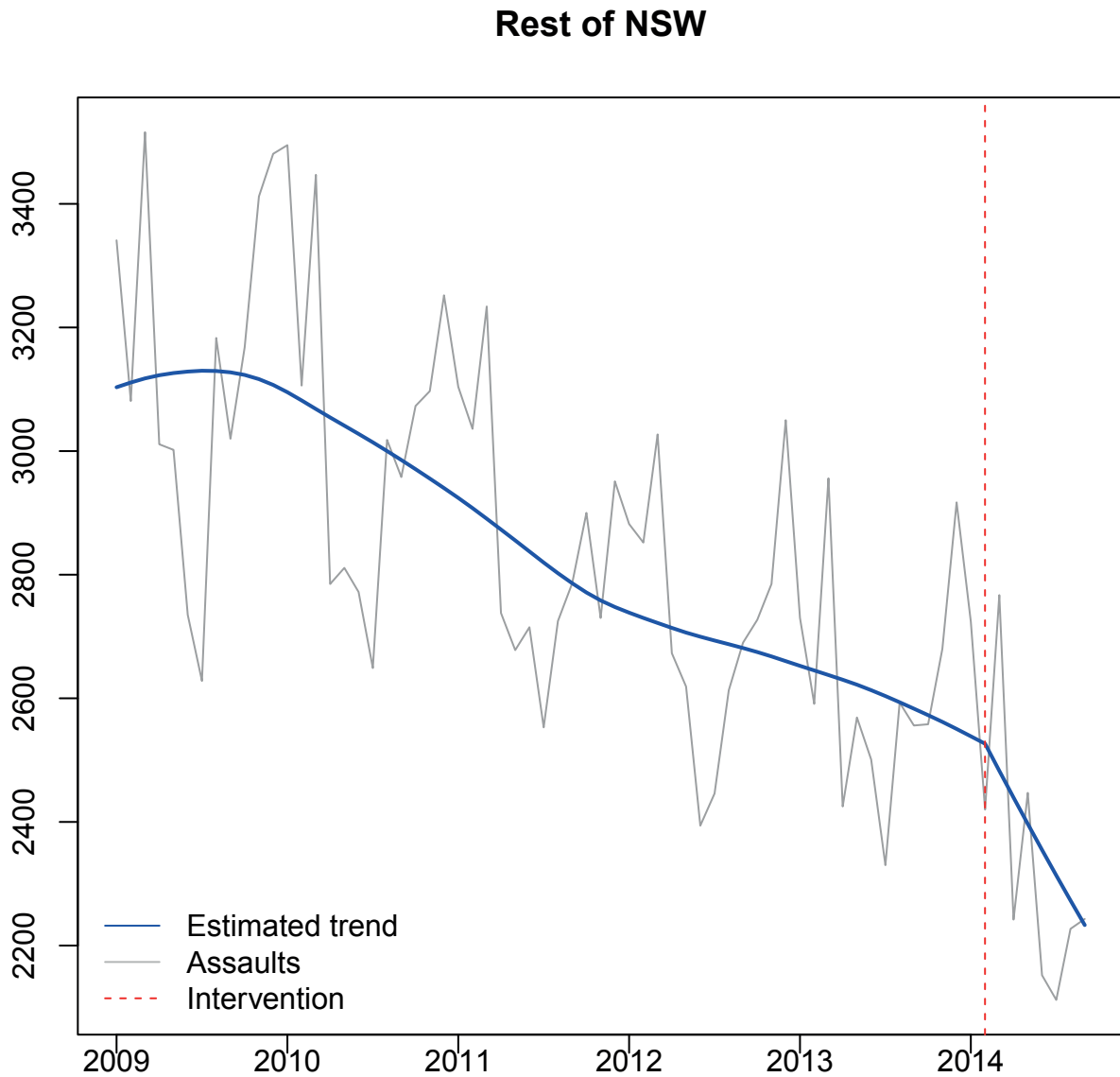


Figure 11. Zoomed view of The Star casino and surrounding streets.

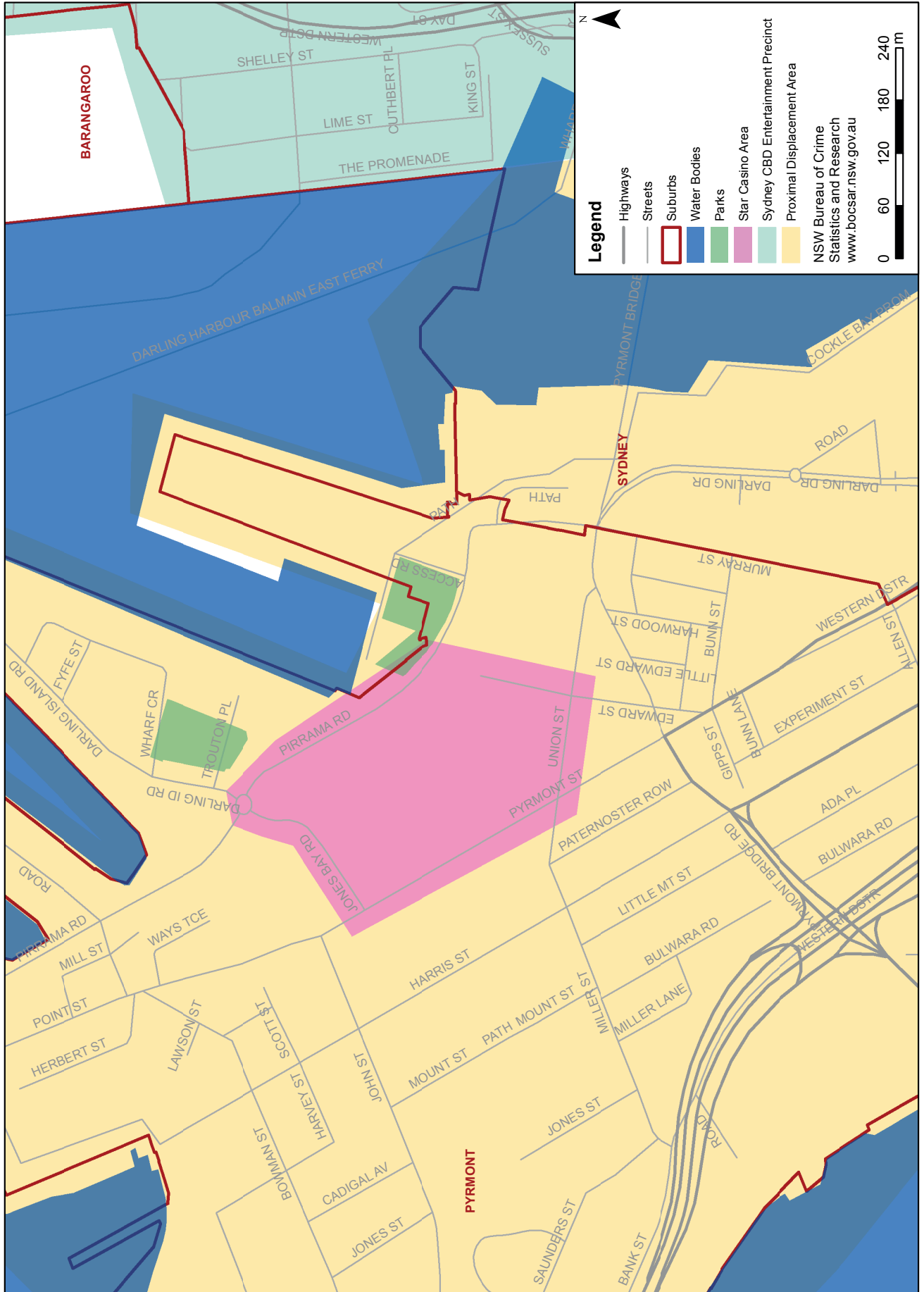


Figure 12. Estimated trend for the number of assaults in The Star Casino between Jan 2009-Sep 2014

Star Casino

